

- NOTES
1. FOR USE WITH (2.36±.05)/.093 DIA BEAD PINS ON (1.57±.20)/.062 THK PCB
 2. CONNECTOR FOR USE WITH TERMINAL NO. 41050
 3. RECOMMENDED PIN HEIGHT OF THE PC BOARD IS (10.03±.51)/.395±.020
 4. TERMINAL EXTRACTION TOOL HTG0695 11-11-0282
 5. THIS PART CONFORMS TO PRODUCT SPEC SMPS-41050

41456- * * * *
 NO. OF CKTS * * * *
 OPTIONS SEE SHEET 2

MATERIAL
 0=NYLON 6/6 94V-2 COLOR NATURAL
 1=NYLON 6/6 94V-2 COLOR DYED BLACK
 2=NYLON 6/6 94V-0 COLOR NATURAL
 DUPONT ZYTEL FE 13001

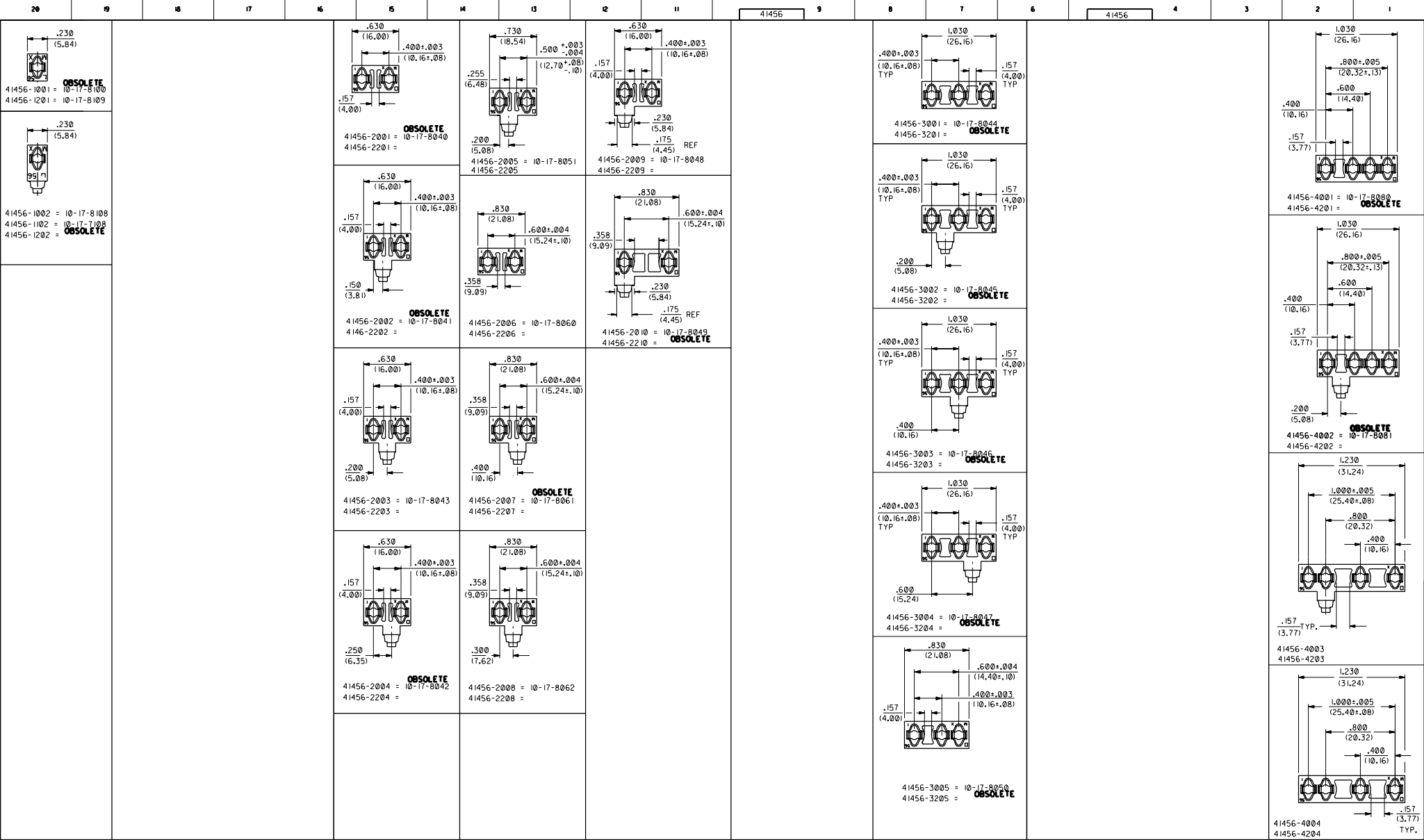
R	02	REV HOOK	UCR2007-0270	OBsolete P/N
I	R	REV LTR	2-12-96 SAMIEC	CONVERT 01/9/18
MFG.	SH.	REV.	LTR.	REVISIONS

DIMENSIONS SHOWN UNLESS NOTED INCH

DRG. FILE	SCALE	DATE	REV. NO.
DRG. NO.	SCALE	DATE	REV. NO.

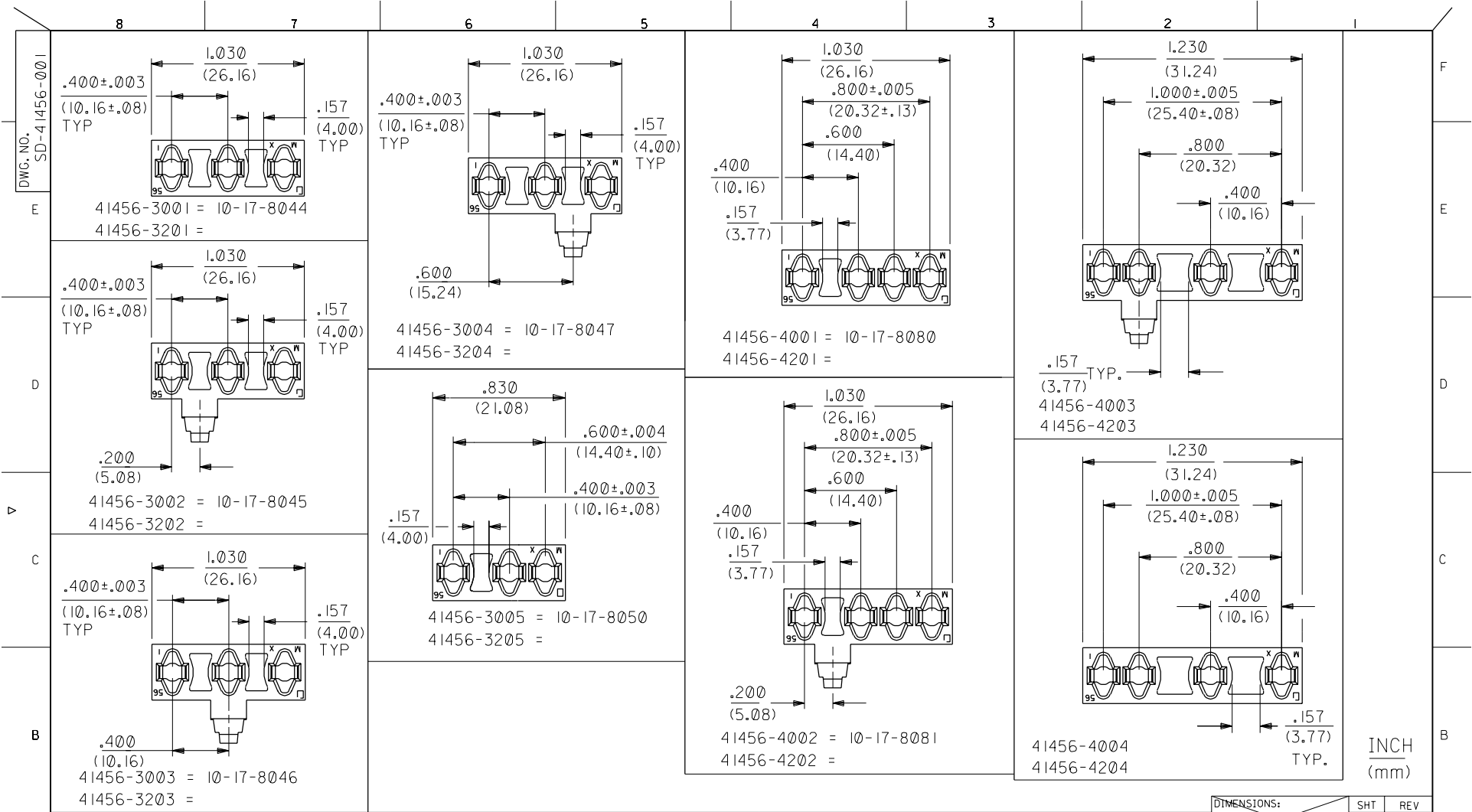
MOLEX INCORPORATED
 SEE CHARTS
 SD-41456-0

NO. OF CKTS: 2
 TITLE: CONNECTOR FOR .093 DIA PINS
 SHEET NO.: 1 OF 2
 DATE: 04/11/90



R	SEE SHEET 1	DIMENSIONS SHOWN IN PARENTHESIS INCH DIMENSIONS SPECIFIED TO PRECEDING STANDARD IN MM	<table border="1"> <tr> <th></th> <th>INCH</th> <th>METRIC</th> </tr> <tr> <td>1 PLACE</td> <td>2</td> <td>2</td> </tr> <tr> <td>2 PLACE</td> <td>2</td> <td>2</td> </tr> <tr> <td>3 PLACE</td> <td>2</td> <td>2</td> </tr> </table>		INCH	METRIC	1 PLACE	2	2	2 PLACE	2	2	3 PLACE	2	2
	INCH			METRIC											
1 PLACE	2	2													
2 PLACE	2	2													
3 PLACE	2	2													
Q2	SEE SHEET 1														
Q1	SEE SHEET 1														
Q	SEE SHEET 1														
N2	SEE SHEET 1														
N1	SEE SHEET 1														
L	SEE SHEET 1														
LTR.	REVISIONS	DRAFT NAME: SAMIEC APPR: LENZ SCALE: 1:1 DATE: 04/12/90 FILE NO: 34145624 DRAWN BY: EDGLEY CHECKED BY:													

REVISIONS ONLY ON CAD SYSTEM
 TITLE: CONNECTOR FOR .093 DIA PIN
 SHEET NO: 2
 DATE: 04/12/90
 MOLEX INCORPORATED
 SEE CHART SD-41456-8
 THIS DRAWING CONTAINS INFORMATION THAT IS PROPRIETARY TO MOLEX AND IS NOT TO BE REPRODUCED OR TRANSMITTED IN ANY FORM OR BY ANY MEANS, ELECTRONIC OR MECHANICAL, INCLUDING PHOTOCOPYING, RECORDING, OR BY ANY INFORMATION STORAGE AND RETRIEVAL SYSTEM.



INCH
(mm)

DO NOT SCALE DRAWING	EC NO. DRAWN: CHK: APPR:	EC NO. DRAWN: CHK: APPR:	EC NO. DRAWN: CHK: APPR:	EC NO. DRAWN: CHK: APPR:	RELEASED EC NO. JJC2001-0189 DRAWN: K.KOHAMA 00/09/25 CHK: T.YAMAGUCHI APPR: M.FUKUSHIMA	MATERIAL 材料	GENERAL TOLERANCES: (UNLESS SPECIFIED) 一般公差	SCALE — # — <input checked="" type="checkbox"/> mm <input type="checkbox"/> INCH	DESIGN UNITS <input checked="" type="checkbox"/> mm <input type="checkbox"/> INCH	THIRD ANGLE PROJECTION	DIMENSIONS: <input type="checkbox"/> mm <input type="checkbox"/> INCH <input checked="" type="checkbox"/> mm ONLY	SHT REV	
	FINISH 仕上り	WIRE RANGE 適用線径範囲	INS. RANGE 影響外径	DESCRIPTION	10 UNDER 未満 +0.2	10 OVER 以上 +0.25	30 UNDER 未満 +0.3	30 OVER 以上 +0.3	ANGLE 角度 +3°	DRAWN BY & DATE K.KOHAMA 00/09/25	CHECKED BY & DATE T.YAMAGUCHI 00/09/25	TITLE: CONNECTOR FOR .093/(2.36) DIA PIN	
	MATERIAL						MATERIAL NO. SEE NOTES			DRAWING NO. SD-41456-001			SHEET NO. 3 OF 3
	MATERIAL						CAD FILENAME 41456001.S03			MATERIAL NO. SEE NOTES			DRAWING NO. SD-41456-001

THIS DRAWING CONTAINS INFORMATION THAT IS PROPRIETARY TO MOLEX INCORPORATED AND SHOULD NOT BE USED WITHOUT WRITTEN PERMISSION.

EN-02J(097) MXJ-54

41456001.S03